

C&R

civil-remediation.com

Every project is possible, delivered **on time** and to **budget**, no nasty surprises.

Demolition ✓ Remediation ✓ Civil Engineering ✓

Civil & Remediation

Demolition ✓ Remediation ✓ Civil Engineering ✓

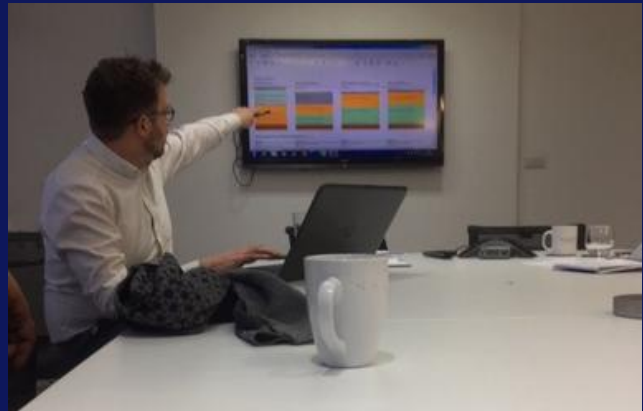
Every project is possible, delivered **on time** and to **budget**, no nasty surprises.

WE CAN

- Remediate **any** brown or blackfield site
- **Reuse or recycle** the majority of the **waste materials** in any demolition project
- Meet **every possible requirement** no matter the environmental sensitivity.

What we do

Consult. Plan. Design. Build. When given the opportunity we aid your site purchase or with preparation for planning discharge. We carry out Site Investigations, Pre Demolition Structural Assessments, Cost Plans and 3D Site Modelling including Volume Assessments



Something you should know

Our tender cost is for delivery of the project needs. (Not just a cost of client issued tender documents aka no nasty post tender extra costs) Our design and regulation knowledge twinned with our alternative design and build-integrated engineering solutions make our bids competitive; allowing us in the last 3 years to have negotiated **87% of turnover as repeat business** through **cost management** and adding value to client.



Capabilities

- ✓ Design and build
- ✓ Site investigation
- ✓ Remediation Strategy
- ✓ Geotechnical, Environmental & Civil design
- ✓ Site 3D modelling and measurement
- ✓ Remediation Strategy Implementation Plan
- ✓ Construction Environmental Management Plan
- ✓ Materials Management Plan



How we do it

Our passion for the planet, sustainability and client satisfaction.

We don't cut corners but we do cut costs, through our remediation strategies.

WE CAN

- Remediate **any** brown or blackfield site
- **Reuse or recycle** the majority of the **waste materials** in any demolition project
- Meet **every possible requirement** no matter the environmental sensitivity.

What we do

We consider ourselves experts in consultation and site investigation, offering alternative approaches with our remediation and material management plans. We provide effective strategy with innovative solutions. We assist with site purchase or with preparation for planning discharge. We carry out Site Investigations, Pre Demolition Structural Assessments, Cost Plans and 3D Site Modelling including Volume Assessments.



Something you should know

We consistently avoid taking materials to landfill as much as we can. Recycling and reusing contaminated soils and obstructions to create stone to help the environment. We are proud in how our reuse, remediate and recycle strategy reduces unnecessary imports of new materials which in turn reduces carbon emissions, transports and contribution to local traffic.

Why we do it

We take pride in knowing that our work not only saves you money but it is also saving the environment. We don't feel the need to be seen planting trees because our work is actively benefiting the environment through mitigation of truck movements and material reuse strategy.



Our People

We know all our employees work to make you happy. Let's meet them.

The Big Boss



Jack
Managing Director

Big believer in no waste strategy through bio-remediation and soil improvements. Challenges conventional approaches to reduce time, cost & produce improved sustainable solutions.

Finance

Director - John



Chartered Accountant. Analyses, tracks projects and provides advice to ensure strict budget projection.

Manager - Tracey



Liaises with subcontractors to ensure smooth payments, manages invoices and issues remittances.

Technical & Engineers

Thomas



Senior
Geo-environmental
Engineer

BSc (Hons) FGS MCIWEM Lead on materials management & remediation. Experience in disused fuel stations, industrial paint factories, cement factories.

Ryan



Procurement
Engineer

Currently studying QS gaining live experience with C&R. Hard-working, reliable team member committed to producing on-time and on-budget projects.

Aron



Technical Lead

Ensures project specification met. Geotechnical testing, QA work, worked on highway projects working to SHW, drainage, attenuation stations, canal walls.

Marketing

Kate



Marketing Exec

Liaises with clients to gain business, creates marketing materials, manages social media and helps gain tender and complete PQQ

Client Feedback

We know we're great and so do our clients...

That's why 87% of our turnover is repeat business.

***Catherine Chilvers, Development Director,
Network Space***

C & R's understanding of the pre-start regulation and planning requirements was instrumental in our gaining approval to commence. Through their impeccable material management and flawless re-use plan C & R reduced disposal and import by over £350,000 from the enabling cost and reduced Construction Works disposal to nil off site at a further £750,000 which meant there were 730 less lorry movements, to the delight of the Council and Environmental Regulator.



***Martin Dye, Senior Officer City of
Wolverhampton Council***

We have been so impressed with the remediation works across the whole of the site... we have not received any complaints from residents, visitors or employees from surrounding commercial and industrial units on this large 30-week duration scheme. That is a remarkable achievement on a remediation scheme of this scale, and it is a testament to how well the works have been controlled and communicated by you all.



***Phil Kerridge Project Director,
Peel Developments***

Impressed with the team and the management of the project process around the pre-start agreements, planning discharge, communication with the regulators and especially the design's alternative approach, this has reduced the enabling cost programme and more importantly to our Council funding partners, it's a sustainable, lorry movement reduction in and out of this busy Salford City area.



Ian Johnson - Project Manager, Chancerygate

C & R provided a first-class service on our Phase 1 at Mersey Reach, Aintree. Their approach was excellent through tender and from start to finish, they were accommodating of our needs and many of the wider complexities associated with developing a contaminated derelict site near to local residents



£1.6m Stoford Developments, Pantheon Park, Wolverhampton

Stoford Developments

The project consisted of structural demolition and land remediation of a disused portion of the existing Acenta steelworks site to render it suitable for a future cost effective commercial development.

Demolition



Site Remediation



The demolition works involved dismantling two large steel frame portal sheds, previously used in steel fabrication which contained significant asbestos materials along with three smaller masonry buildings, several reinforced concrete structures and a 40m tall defunct steel water tower.

Demolition ✓

Remediation ✓

Civil ✓

- 100% site won materials were processed on site to be used in site remediation
- Bio-remediation, soil stabilisation and modification needed to decontaminate.
- Deliberate controlled collapse of defunct steel water tower

Site-wide Remediation progress



Controlled collapse of water tower



Alex Morgan - Stoford Developments

"After having done an impressive job at Pantheon we will certainly consider C & R on future suitable projects."

£8.7m - Port Loop - Phases 1 - 4

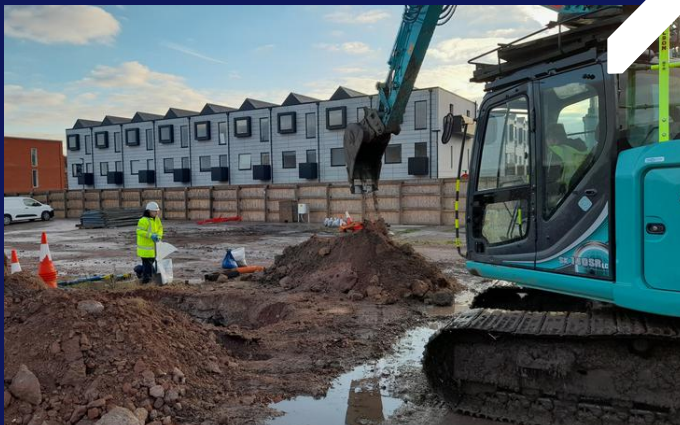
urbansplash



Demolition ✓

Remediation ✓

Civil ✓



C&R were awarded the £2.1m contract for the enabling works at Port Loop, Phase 3, having previously delivered Phases 1 & 2, to prepare the site for the construction of over 100 modular homes, rejuvenating the local community in Ladywood, Birmingham.

Our design saved this project:

- 8500m³ / 18700 tonnes of non-hazardous waste being disposed to landfill through the raising of earthworks levels.
- 200m³ / 440 tonnes of hazardous waste being disposed to landfill by the treatment of material on site for reuse.
- 12500m³ / 27500 tonnes of hardstanding being disposed to landfill by processing to recycled aggregates (MOT & 6F2).

The site had a history of industrial land uses, including a former paint factory & metalworks. The 64,000m² site was predominantly covered in hardstanding, with site wide persistent & irregular exceedances in heavy metals, 6 No TPH hotspots to be remediated & a hydrocarbon impacted groundwater plume. The canal wall was in a state of disrepair and required demolition & reconstruction works.

£8.7m - Port Loop - Phases 1 - 4

urbansplash



Demolition ✓

Remediation ✓

Civil ✓



C&R were awarded the £2.1m contract for the enabling works at Port Loop, Phase 3, having previously delivered Phases 1 & 2, to prepare the site for the construction of over 100 modular homes, rejuvenating the local community in Ladywood, Birmingham.

Our design saved this project:

- 8500m³ / 18700 tonnes of non-hazardous waste being disposed to landfill through the raising of earthworks levels.
- 200m³ / 440 tonnes of hazardous waste being disposed to landfill by the treatment of material on site for reuse.
- 12500m³ / 27500 tonnes of hardstanding being disposed to landfill by processing to recycled aggregates (MOT & 6F2).

The site had a history of industrial land uses, including a former paint factory & metalworks. The 64,000m² site was predominantly covered in hardstanding, with site wide persistent & irregular exceedances in heavy metals, 6 No TPH hotspots to be remediated & a hydrocarbon impacted groundwater plume. The canal wall was in a state of disrepair and required demolition & reconstruction works.

1.6m St.Helens, Glass Futures



Relict foundation removal & reuse



Mine shaft capping



Bulk earthworks

Demolition ✘

Remediation ✔

Civil ✔

C & R took an old contaminated site with many remediation issues and made it oven ready for Network Space to take over so they could build properties on top. C & R installed 750lm of highway infrastructure including services.

Client saving of £700,00 through offering alternative approach of soil stabilisation.

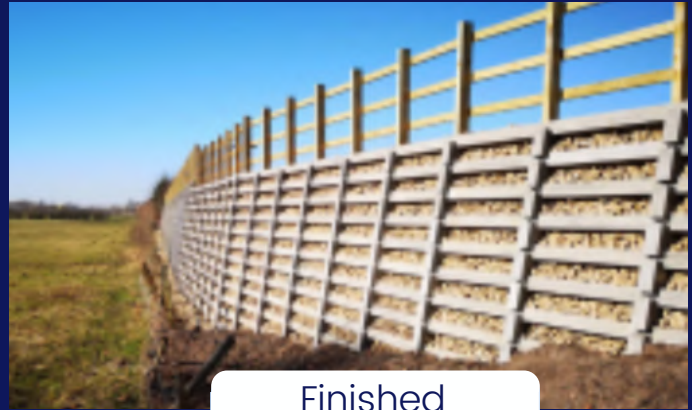


The site was complex due to previous use as a glass manufacturing site, a railhead and prior to that a coal mine access. The site is surrounded by a live business park and St. Helens rugby club. There was significant statutory undertakers to be diverted to facilitate the works. The alternative cost saving remediation strategy and materials management and reuse plan supported an extremely aggressive completion date for phase 1 that was linked to a 54million development that funding was subjective to start date October 2022. Also before (aggressive programme) there was also 2 mine shafts circa 9 metres deep that had to be capped and verified with UK coal. The overall earthworks and reengineering volume was in excess of 500,000 tonnes.

Network Space client and TetraTech engineer consultant confirm that our approach has mitigated over £700,000 cost to job by remediation around asbestos impacted soil preventing disposal and import costs. Further savings were made by modification of soil to provide a pile mat, meaning new works contractor did not dispose offsite and stockpiled for Phase 2, with C & R later reengineering that material into a product, again mitigating disposal and import. Another safe, on time, on-budget, sustainable project with significant lorry movement mitigation and savings; all in a day's work for C & R.

£2.2m Liberty Park - Widnes

Stoford Developments, Liberty Park Widnes



C&R were awarded the design and build of a 1.8 km access road to a new business park development. The team also completed the cycle and pedestrian path, infrastructure, surface and foul water drainage, rigid retaining wall, two substations and pumping station installation.

Demolition ✓

Remediation ✓

Civil ✓

Site Completion



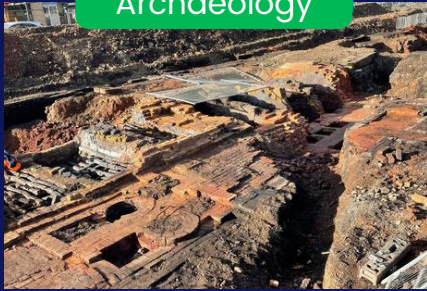
- Site adjoining live Network Rail (NWR) lines / Methods used required NWR agreement
- Stabilised capping replacement to mitigate 6F2 import & disposal
- Concrete crib lock retaining wall installed
- 2 Substations constructed with on site RC slab roof
- Pumping station and drainage installed

Moor Lane, Bolton Bus Station

For AEDI Construction & StepPlaces

Taking redundant bus station built over town centre steel works and factory. Dealing with statutory undertakers, contaminated land and significant below ground obstructions.

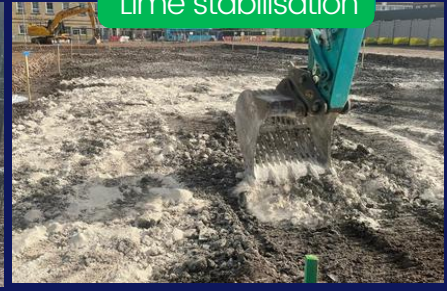
Archaeology



During works



Lime stabilisation



This work involved demolishing Bolton bus station is part of a multi-million pound project to inject life back into Bolton town centre. We are paving the way for more housing, green open space, making Bolton town centre a more social, brighter place to live.

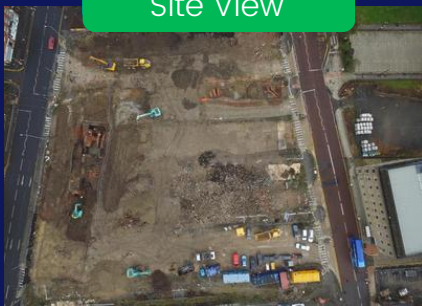
Demolition ✓

Remediation ✓

Civil ✓

C & R agreed all prestart requirements to commence works. Converted 24,000 tonnes of below ground concrete obstructions into MOT stone to be reused onsite. Mitigating 3000 wagon movements. This site attained 0% disposal 0% import by design.

Site View



Night work



Finished Site

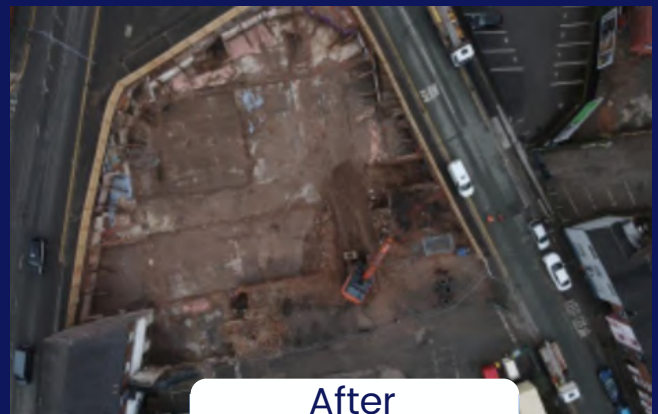


Wes Arrowsmith AEDI Project Manager

"I was so happy to know C & R were working on this project. they're very reliable, have high standards, good communication and we work really well together. We always know what to expect when working with them"

240k Demolition - Newcastle Nightclub

Zanzibar Nightclub – awarded by our client Aspire Housing



Demolition of the 4 story building including the deep basements; building had been vacant for 16 years and was planned to be redeveloped into housing, work units and a space for start-up businesses.

Demolition ✓

Remediation ✓

Civil ✓

- Site materials were sifted and sorted for recycling or re-use, with 93% re-used and only 7% to landfill.

There was an 8 week planning agreement, with planning, EHO and Highways. With significant Temporary Works Design approval the scheme was delivered in 8 weeks. The project was completed with no safety, environmental or 3rd party incidents, on time and to budget.

What did Aspire Housing have to say?

"Helpful and collaborative from tender stage to post completion. Help with planning and early discharge was evidence of significant experience and competent leadership. When on site there was effective daily communications via WhatsApp group, over and above our visits and meetings. Post works clean-up was prompt, and all neighbours were impressed with the delivery. As Built records were timely and in 3D for use in follow on design. I would actively promote further works with C&R as it has been a pleasure working with the whole team. Thanks for a successful project at a challenging site"

The areas we cover

Every project is possible, delivered on time and to budget, no nasty surprises.



WHERE ARE WE?

Civil and Remediation Ltd.
Grosvenor House
3 Chapel Street
Congleton
Cheshire CW12 4AB

We are based in Congleton but have a large expanse of projects over the North West

Telephone Number: 07582 00011
Jack.Rowley@civil-remediation.com

Our Social Value

Simulator training ✓ Ex-offenders programme ✓ Apprenticeships ✓

Through our collaborations and simulator training we are working with schools and prisons to increase engagement and opportunities in engineering.

Experience Days

Using our ties with schools around the UK we often visit career days or, are invited to give talks on engineering and are currently implementing our simulator training within schools for the young adults at Holmes Chapel School to try.



Vlad Ungureanu - Engineering placement student

Apprenticeships & Placements

Not only have we implemented simulators in 12 North West HMPs (24 simulators total) we have also employed 2 ex-offenders. As well as this, we also employ apprentices, placement students and graduates. We like to ensure we have an intake of fresh talent and train them around our innovative ways and standards of best practice.

Simulator Training

A C&R led initiative with several accompanying partners; this joint venture allows individuals to test their groundwork skills, develops interest for the work and also can help to identify individuals with a natural aptitude for operating machinery. It gives young adults a real insight into a real job and allows them to experience first-hand.



Simulator Experience

2 days ✓ Collaboration ✓ Engineering Insight ✓

Over the course of two days, students at Holmes Chapel School, Crewe, had exclusive access to our groundwork simulator along with the opportunity to chat to industry experts.

How it went...

Using our ties with schools around the UK we often visit career days or are invited to give talks on engineering and are currently implementing our simulator training within schools for the young adults at Holme Chapel School to try.



Feedback from the school

"It's really great to have the opportunity to actually get first-hand experience rather than just talk to someone at a careers event, it gives a more real experience especially, for people like myself who likes to be outdoors - seems like the perfect career!"

"The students really appreciate anyone coming showing interest in them, their talents. There is great power in conversation as well as the ability to give the kids first-hand experience - really great engagement!"

Inclusivity & Awareness

Construction and engineering are primarily male-dominated industries and we want this simulator to educate and inspire everyone and anyone, especially women to consider such careers and do not discount themselves from certain jobs because of their gender.



Accreditation

We don't just like to say we have high standards, we have accreditations to prove them.



We are members of the Civil Engineering Contractors Association.



We are members of the Contractors Health and Safety Assessment Scheme.



We are members of Constructionline which allows construction customers to have access to us.

Our Partners

We are proud to be closely working with a variety of companies

